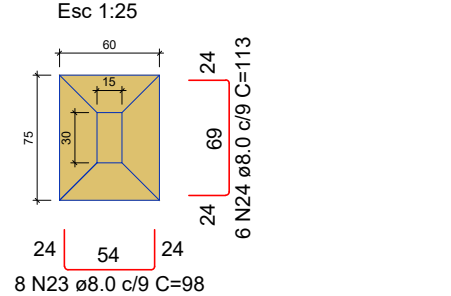


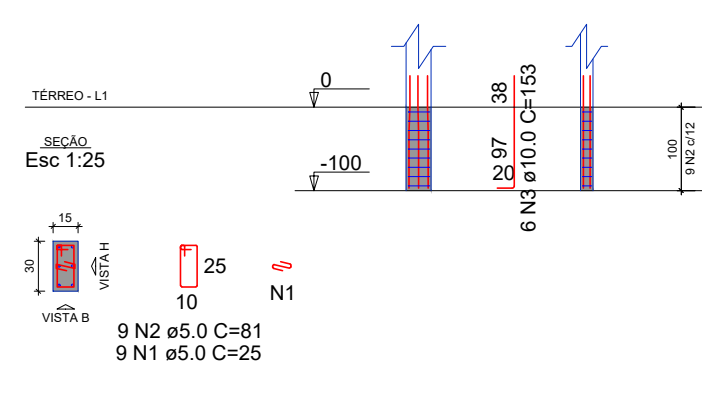
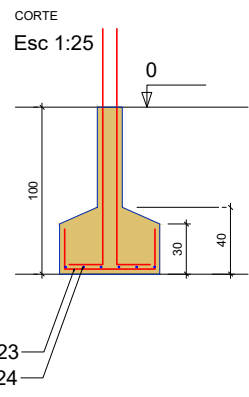
S1=S2=S3=S4=S5=S6=S7=S8=S9=S10=S11=S12  
 =S13=S14=S15=S16=S17=S18=S19=S20=S21  
 =S22=S23=S24=S25=S26=S27=S28=S29=S30  
 =S31=S32=S33=S34=S35=S36=S37=S38=S39

P1=P3=P4=P5=P6=P9=P10=P12=P15=P17=  
 =P18=P25=P27=P31=P32

PLANTA  
 Esc 1:25

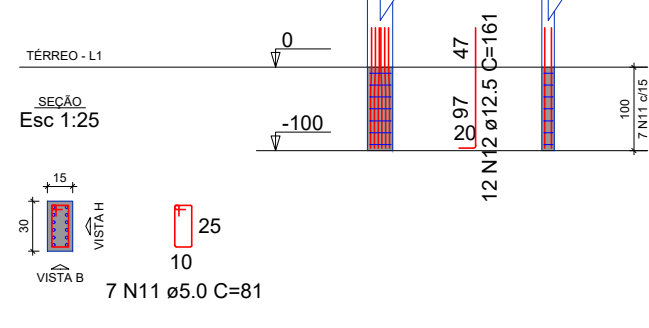


Solo com capacidade de suporte > 20.00 kgf/cm<sup>2</sup>  
 Solo compactado sobre a sapata  
 Peso específico > 2000.00 kgf/m<sup>3</sup>



P11

VISTA.H Esc 1:50  
 VISTA.B Esc 1:50



RELAÇÃO DO AÇO

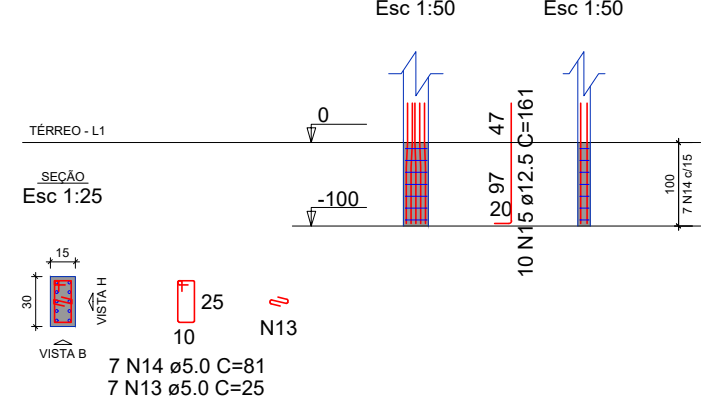
ELEMENTO	AÇO	N	DIAM (mm)	QUANT	C.UNIT (cm)	C.TOTAL (cm)
15xP1	CA60	1	5.0	135	25	3375
	CA60	2	5.0	135	81	10935
	CA50	3	10.0	90	153	13770
P2	CA60	4	5.0	7	81	567
	CA50	5	12.5	4	161	644
6xP7	CA60	6	5.0	54	81	4374
	CA50	7	10.0	48	153	7344
P8	CA60	8	5.0	9	25	225
	CA60	9	5.0	9	81	729
P11	CA50	10	10.0	10	153	1530
	CA60	11	5.0	7	81	567
P13	CA50	12	12.5	12	161	1932
	CA60	13	5.0	7	25	175
	CA60	14	5.0	7	81	567
	CA50	15	12.5	10	161	1610
2xP14	CA60	16	5.0	14	81	1134
	CA50	17	12.5	16	161	2576
8xP20	CA60	18	5.0	72	81	5832
	CA50	19	10.0	32	153	4896
3xP23	CA60	20	5.0	21	25	525
	CA60	21	5.0	21	81	1701
39xS34	CA50	22	12.5	18	161	2898
	CA50	23	8.0	304	98	29792
	CA50	24	8.0	228	113	25764

RESUMO DO AÇO

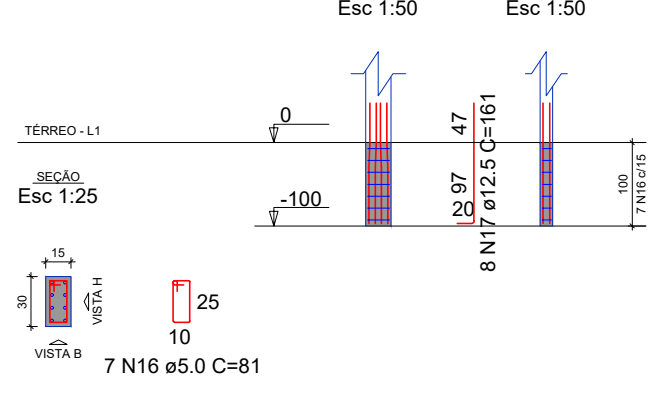
AÇO	DIAM (mm)	C.TOTAL (m)	PESO + 0% (kg)
CA50	8.0	555.6	219.2
	10.0	275.4	169.8
CA60	12.5	96.6	93.1
	5.0	307.1	47.3
PESO TOTAL (kg)			
CA50		482.1	
CA60		47.3	

Volume de concreto (C-25) = 7.65 m<sup>3</sup>  
 Área de forma = 64.98 m<sup>2</sup>

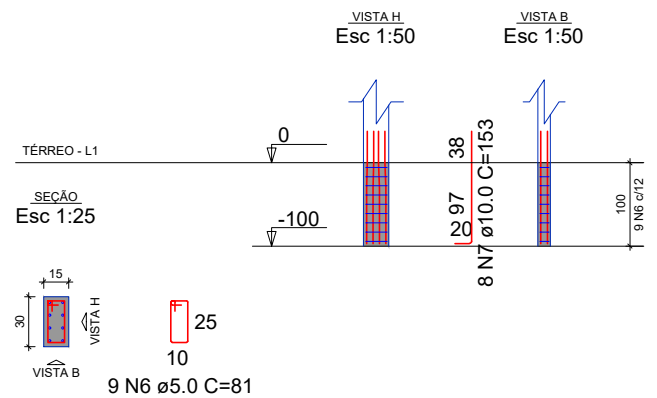
P13



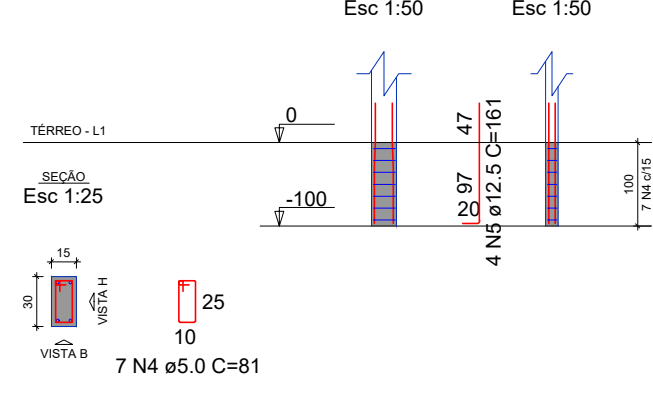
P14=P34



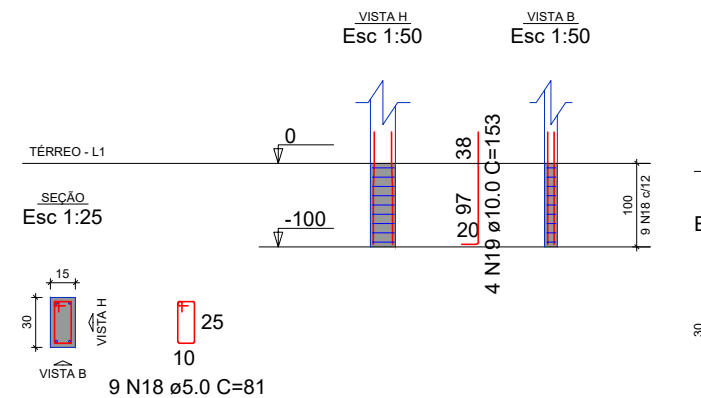
P7=P16=P19=P21=P22=P24



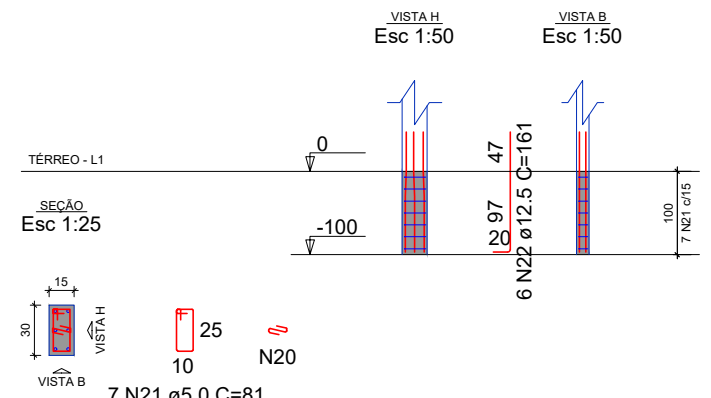
P2



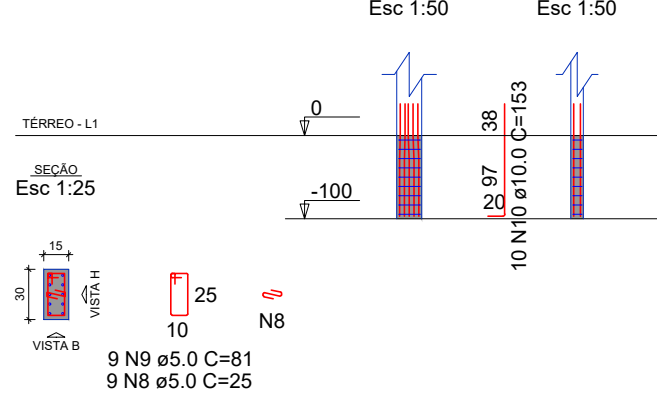
P20=P28=P29=P30=P33=P35=P36=P37=P39



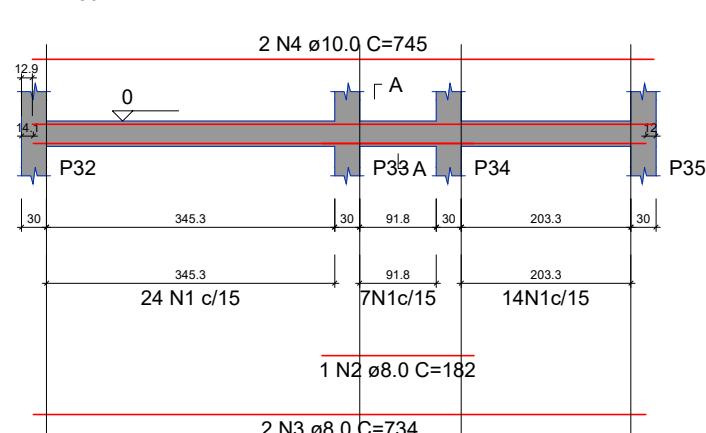
P23=P26=P38



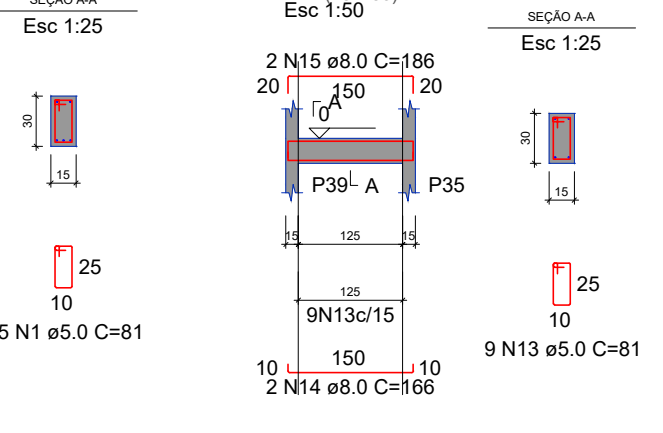
P8



VT1 (15 x 30)  
 Esc 1:50



SEÇÃO A-A  
 Esc 1:25



RELAÇÃO DO AÇO

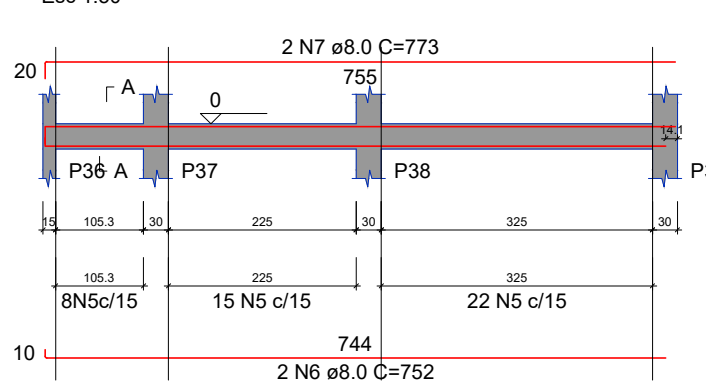
ELEMENTO	AÇO	N	DIAM (mm)	QUANT	C.UNIT (cm)	C.TOTAL (cm)
VT1	CA60	1	5.0	45	81	3645
	CA50	2	8.0	1	182	182
	CA50	3	8.0	2	734	1468
VT2	CA50	4	10.0	2	745	1490
	CA60	5	5.0	45	81	3645
VT3	CA50	6	8.0	2	752	1504
	CA50	7	8.0	2	773	1546
VT4	CA60	8	5.0	8	81	648
	CA60	9	5.0	3	104	312
	CA50	10	10.0	2	169	338
	CA50	11	10.0	1	133	133
VT4	CA50	12	10.0	2	184	368
	CA60	13	5.0	9	81	729
	CA50	14	8.0	2	166	332
	CA50	15	8.0	2	186	372

RESUMO DO AÇO

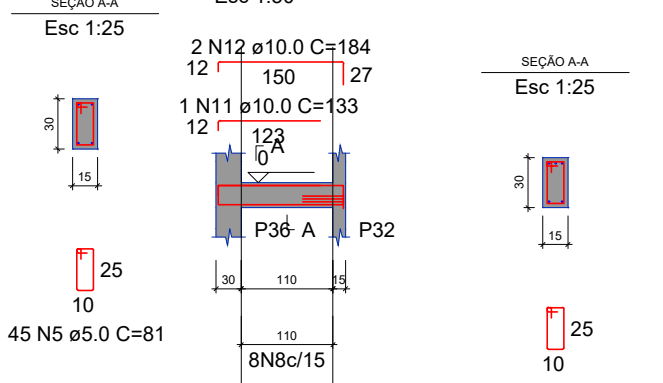
AÇO	DIAM (mm)	C.TOTAL (m)	PESO + 0% (kg)
CA50	8.0	54	21.3
	10.0	23.3	14.4
CA60	5.0	89.8	13.8
PESO TOTAL (kg)			
CA50		35.7	
CA60		13.8	

Volume de concreto (C-25) = 0.82 m<sup>3</sup>  
 Área de forma = 13.73 m<sup>2</sup>

VT2 (15 x 30)  
 Esc 1:50



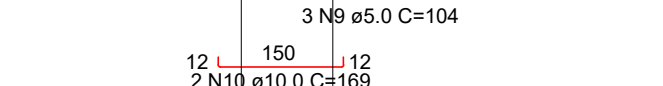
SEÇÃO A-A  
 Esc 1:25



VT3 (15 x 30)  
 Esc 1:50



SEÇÃO A-A  
 Esc 1:25



PROPRIETÁRIO: CÂMARA MUNICIPAL DE PATOS CNPJ: 09.309.618/00001-02

ENGENHEIRO: LUCAS SOUZA DOS SANTOS LEITÃO NUNES CREA: 1615595961

# PROJETO ESTRUTURAL

PROJETO: REFORMA E AMPLIAÇÃO DA CÂMARA MUNICIPAL DE PATOS  
 ENDEREÇO: RUA HORACIO NOBREGA, 600, BELO HORIZONTE, PATOS/PB  
 PROPRIETÁRIO: CÂMARA MUNICIPAL DE PATOS

DESENHO	RESPONSÁVEL	RUBRICA	DATA:	REVISÃO:
			Novembro de 2021	
CÓPIA			ÁREA DO TERRENO: 1595,35 m <sup>2</sup>	
ART			ÁREA DA AMPLIAÇÃO: 211,37 m <sup>2</sup>	
PRANCHA			ÍNDICE DE APROV.: 2	

PRANCHA	DESENHO:	ESCALA:
01 / 01	FUNDAÇÕES VIGAS TÉRREO (BALDRAME)	INDICADAS

**LEITÃO ENGENHARIA**  
 & SERVIÇOS / CNPJ: 37.263.798/0001-36