

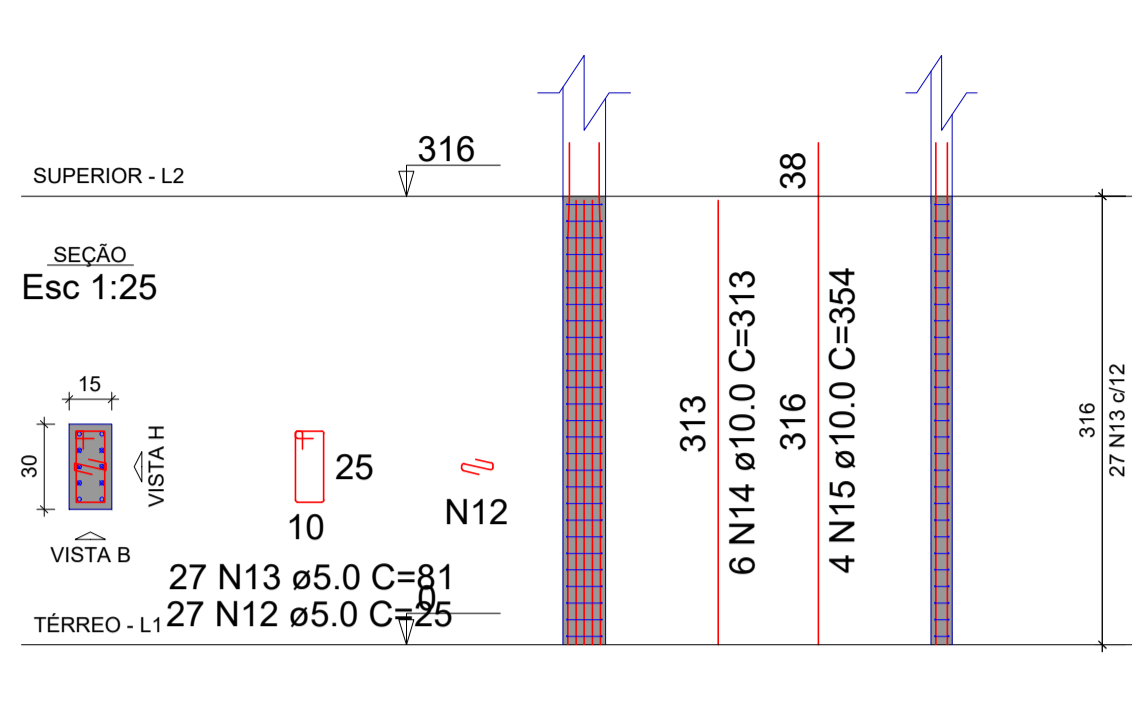
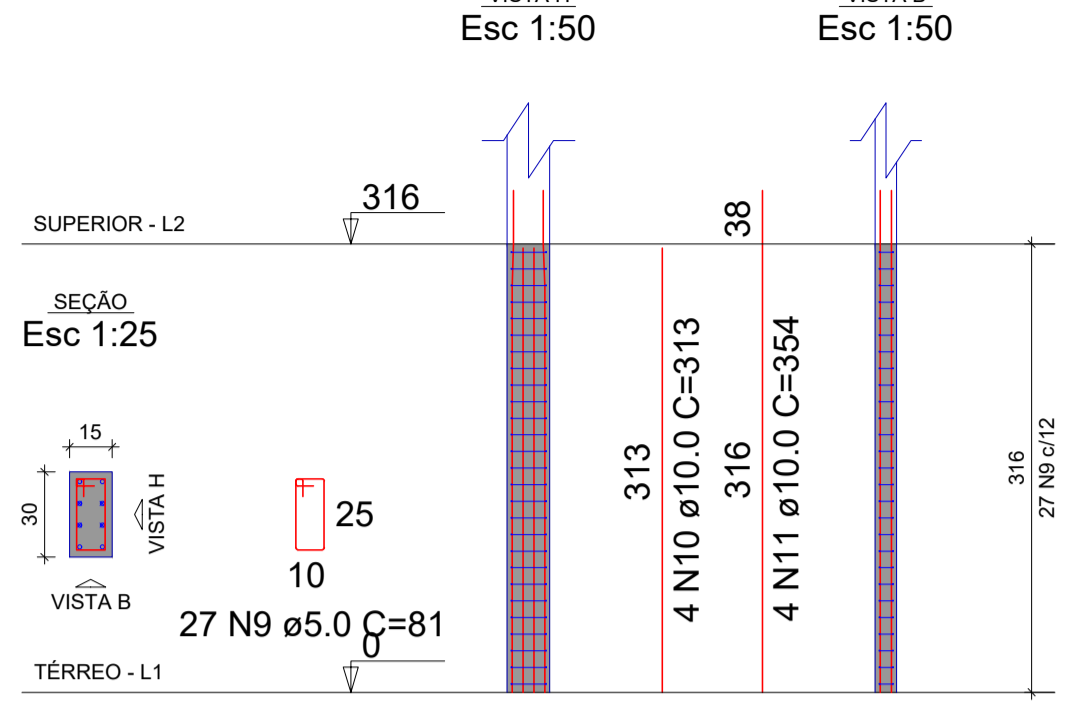
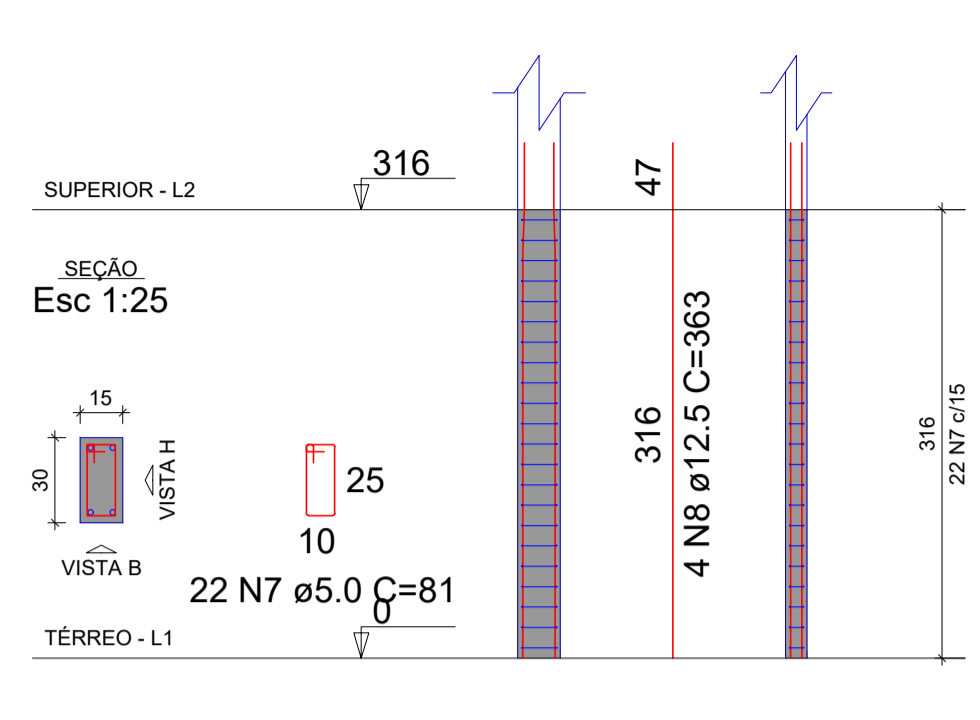
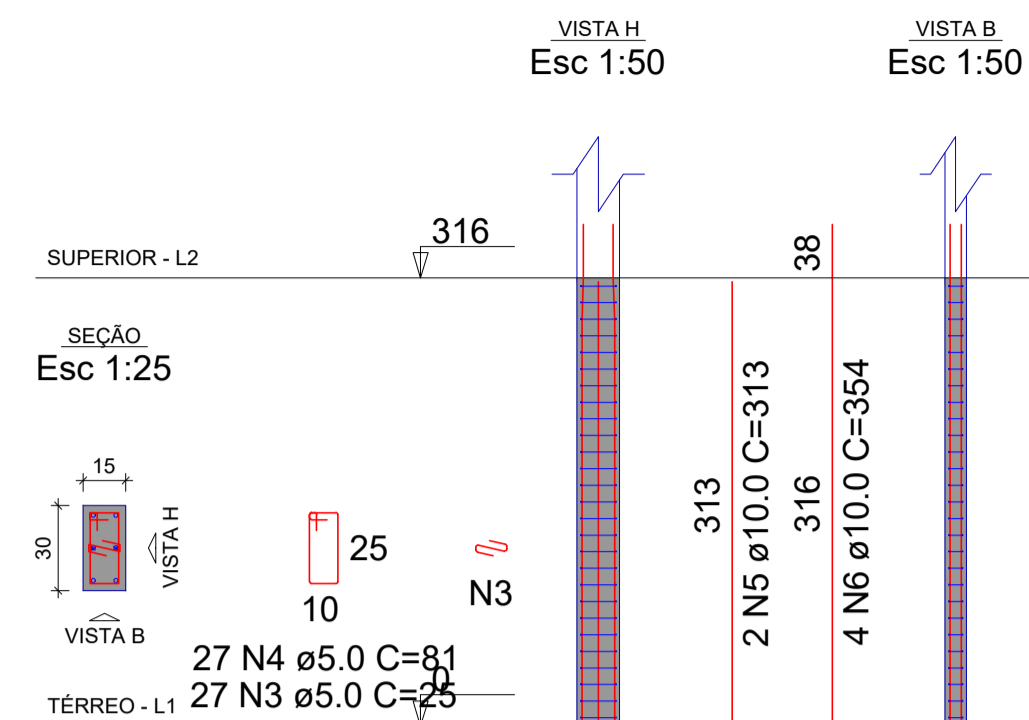
P1=P3=P4=P5=P6=P9=P10=P12=P15=P17=P18=
=P27=P31=P32

P2

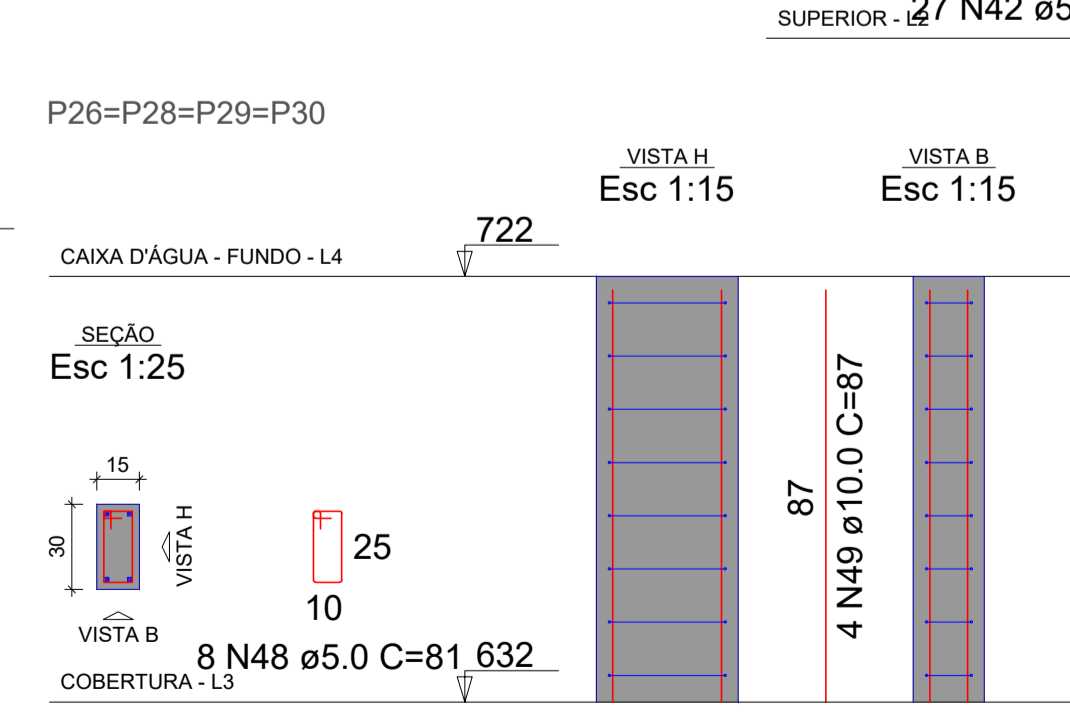
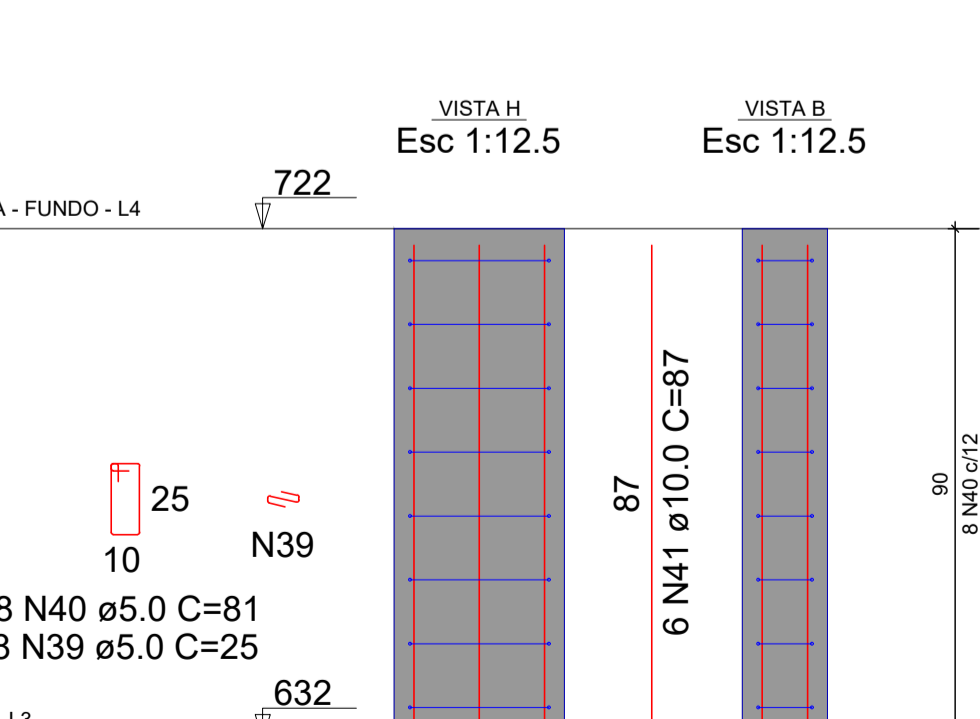
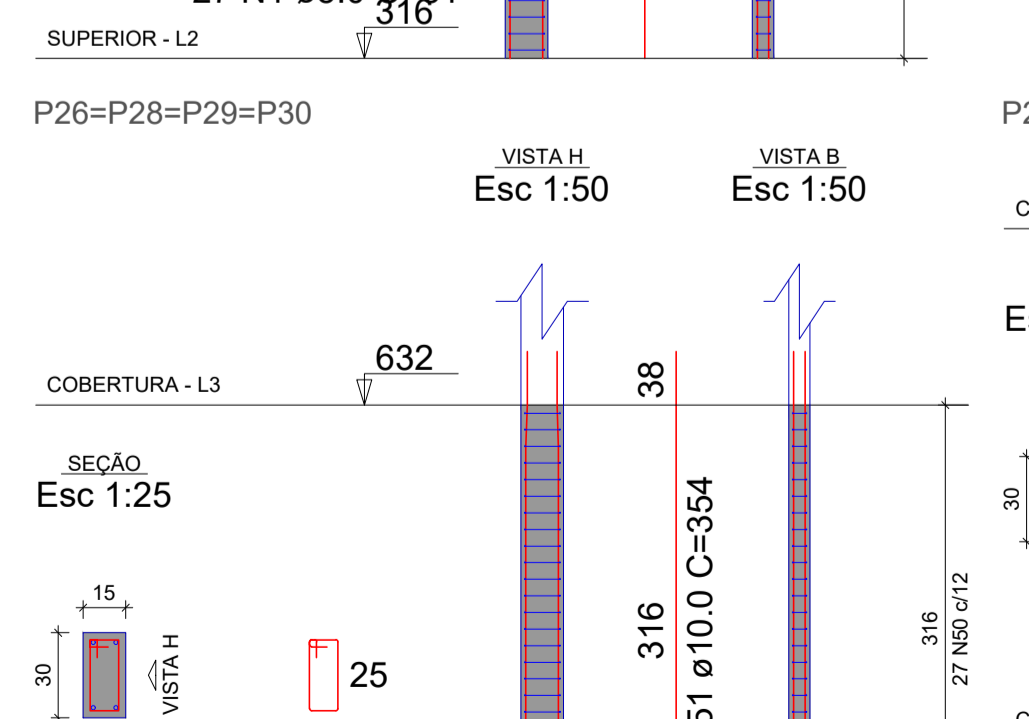
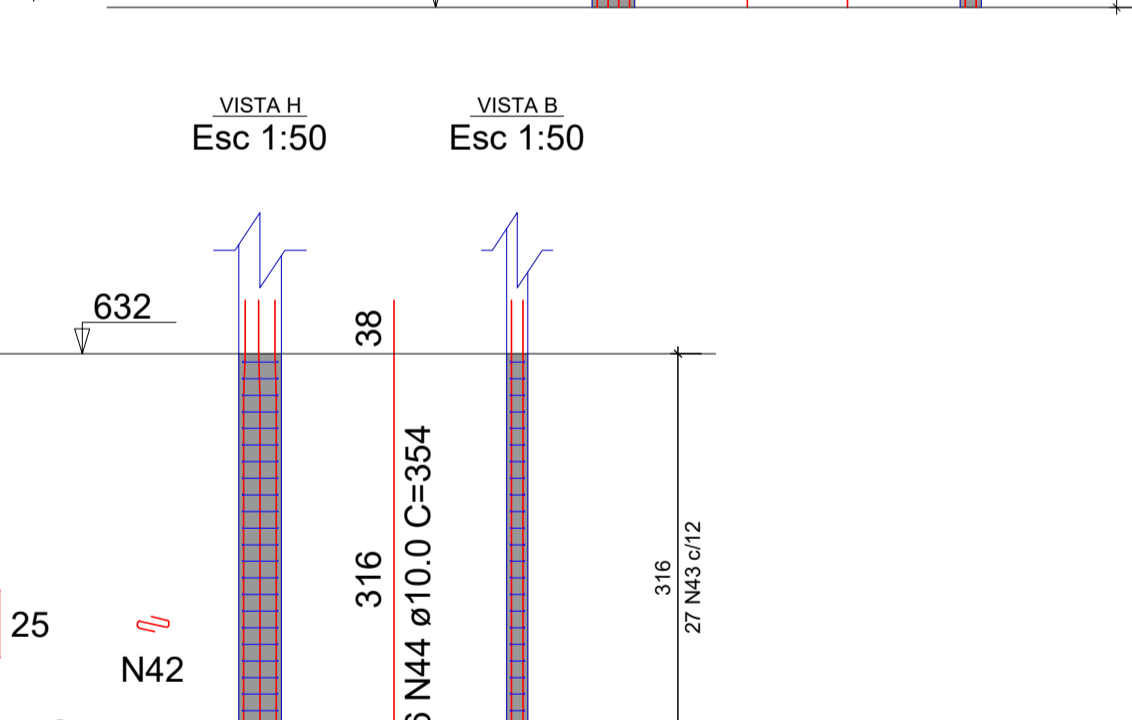
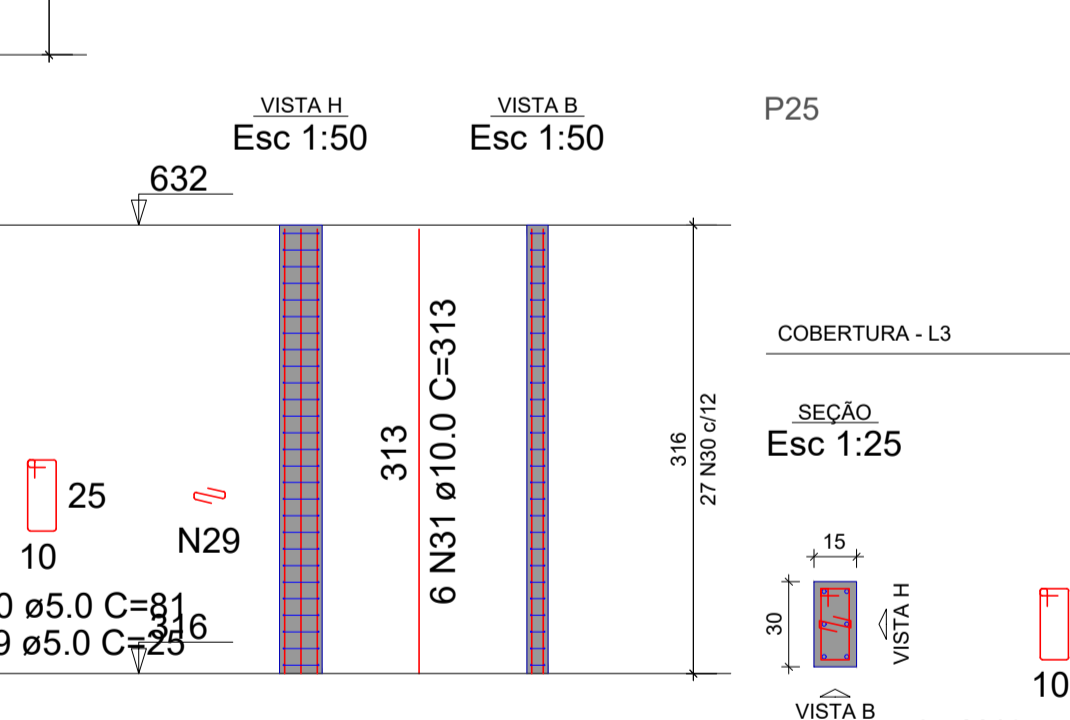
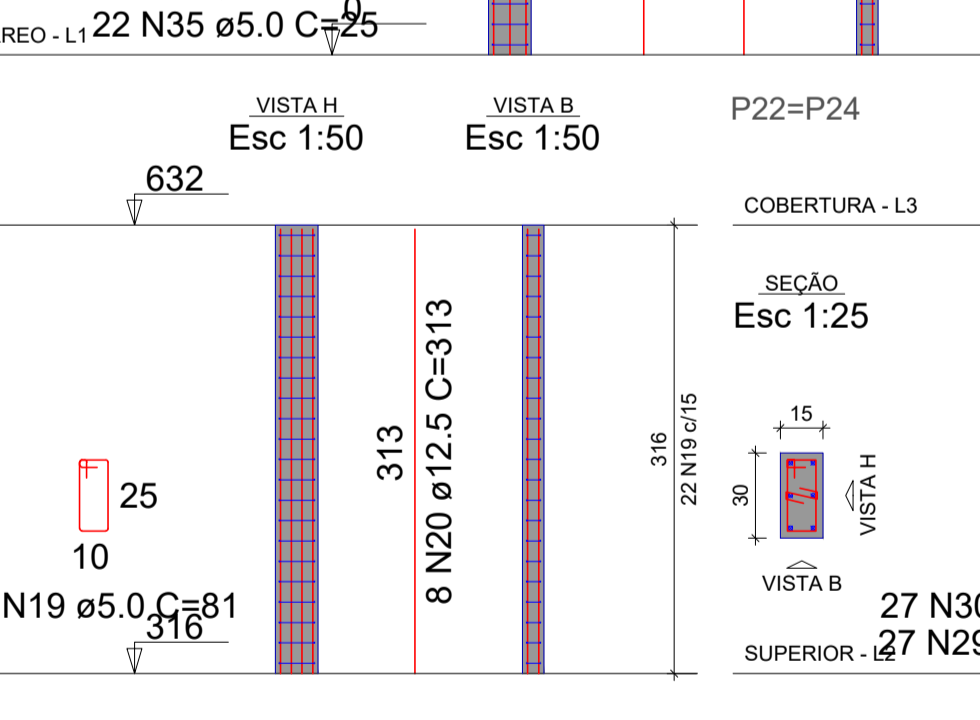
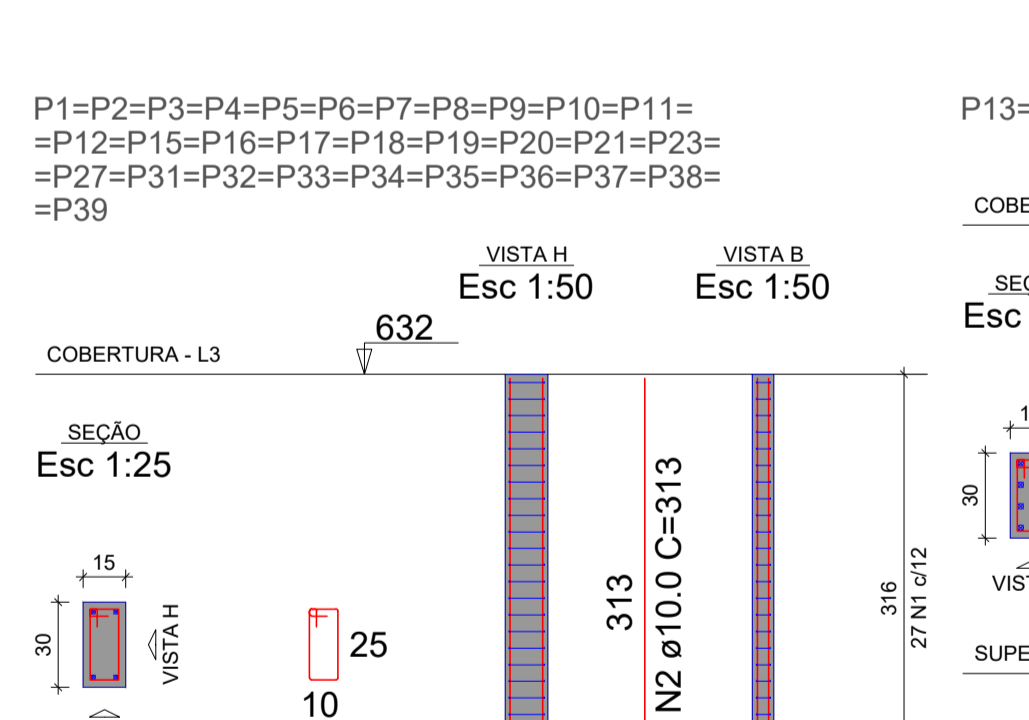
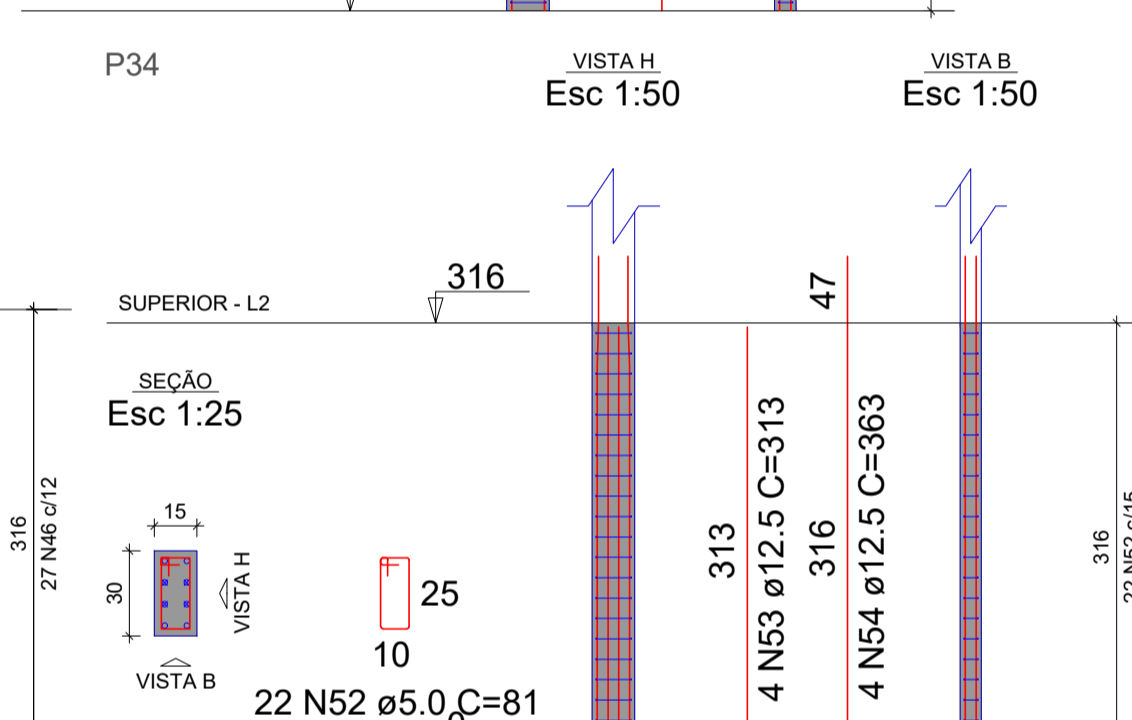
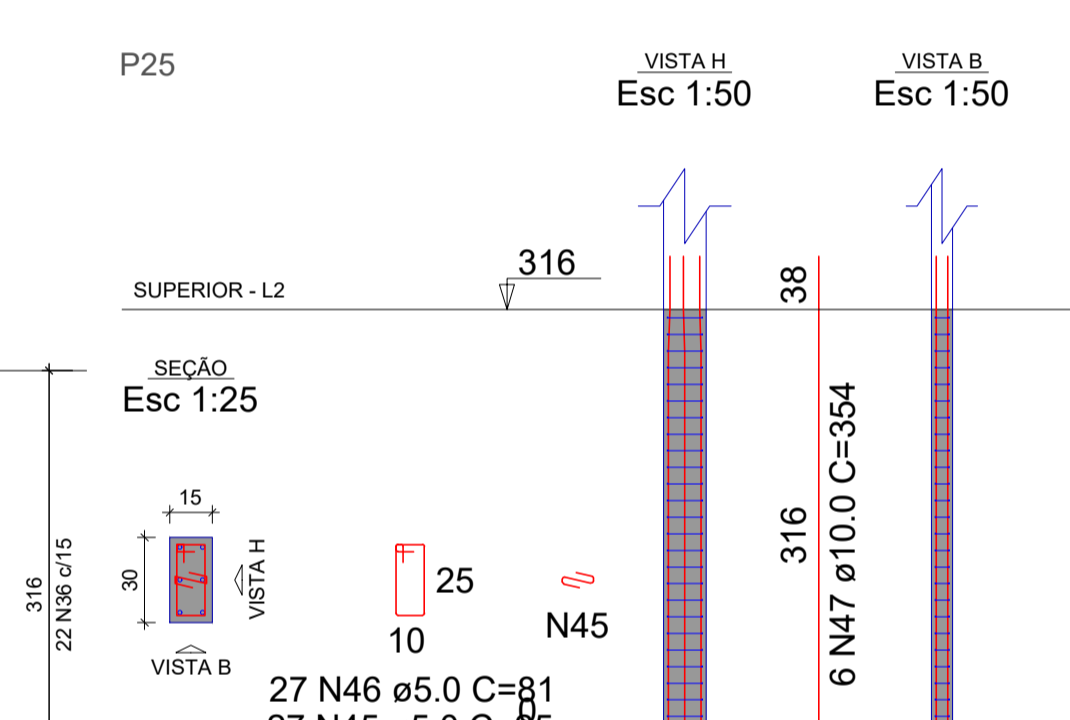
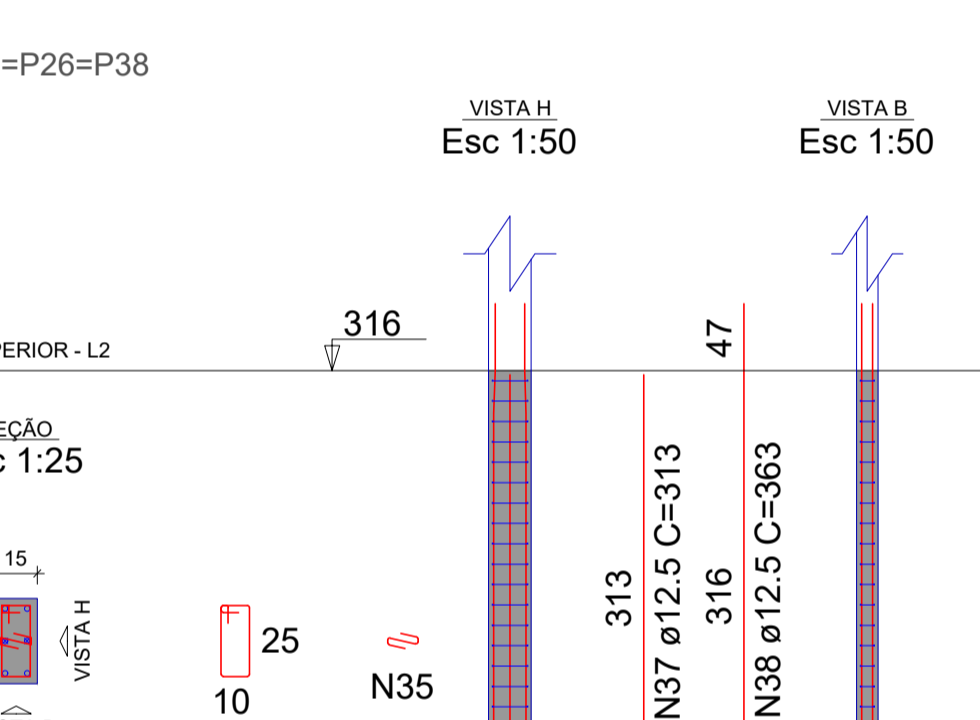
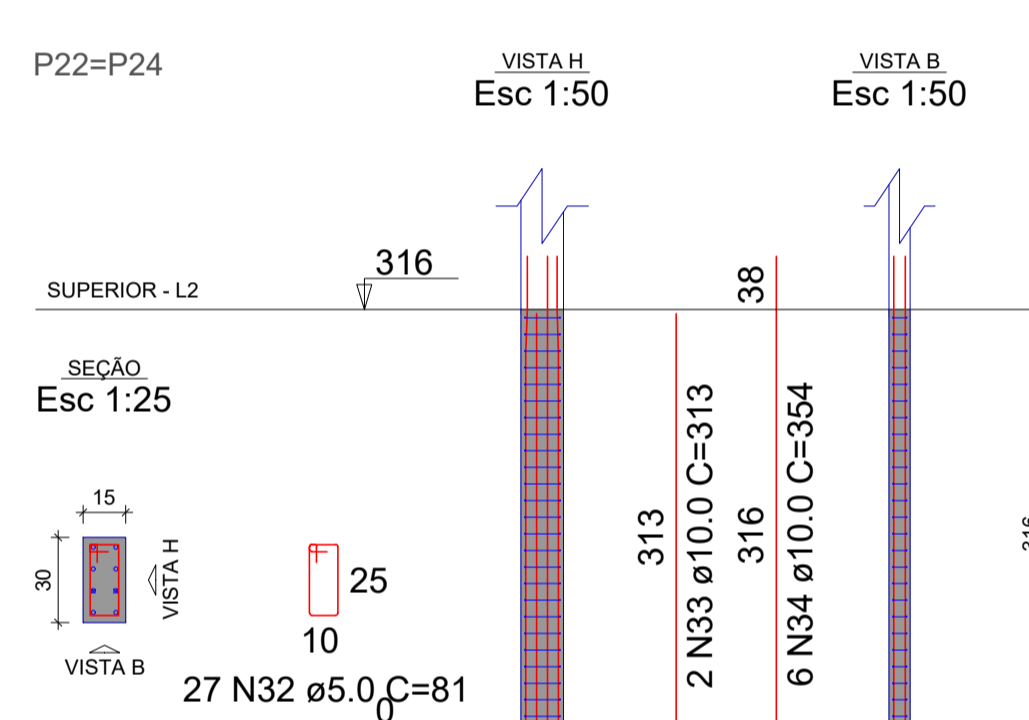
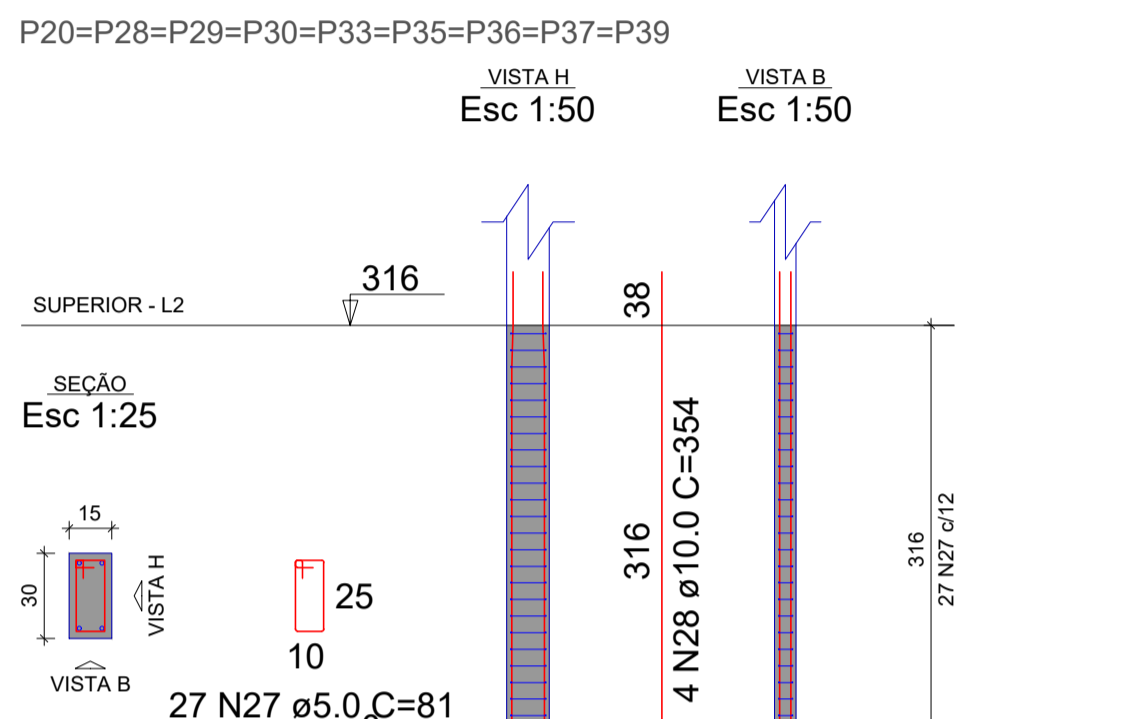
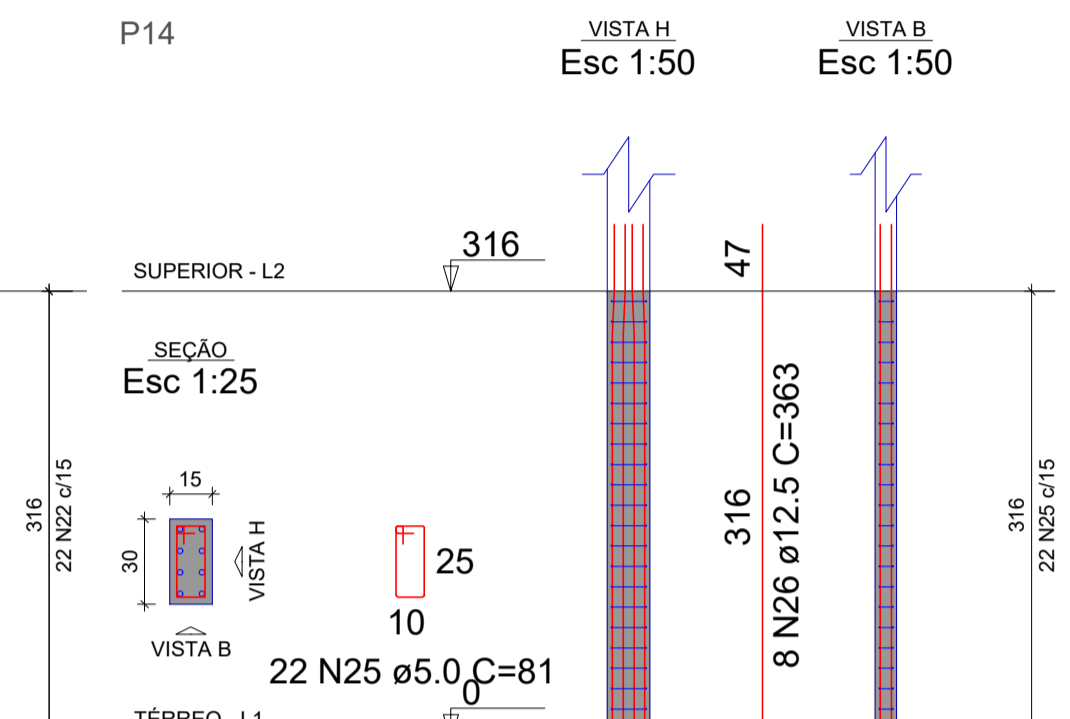
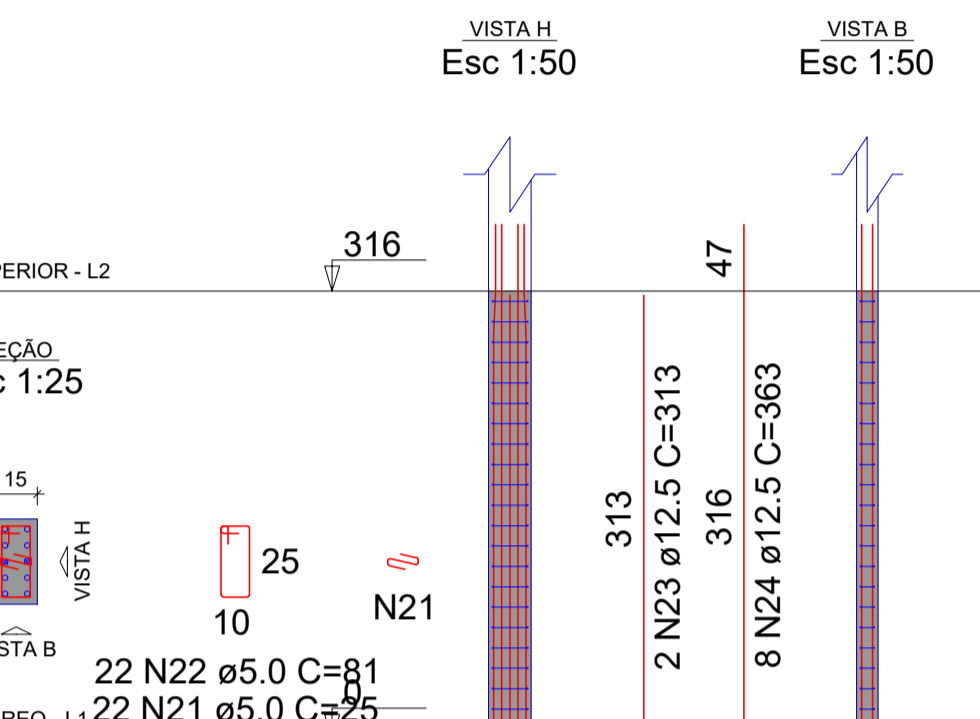
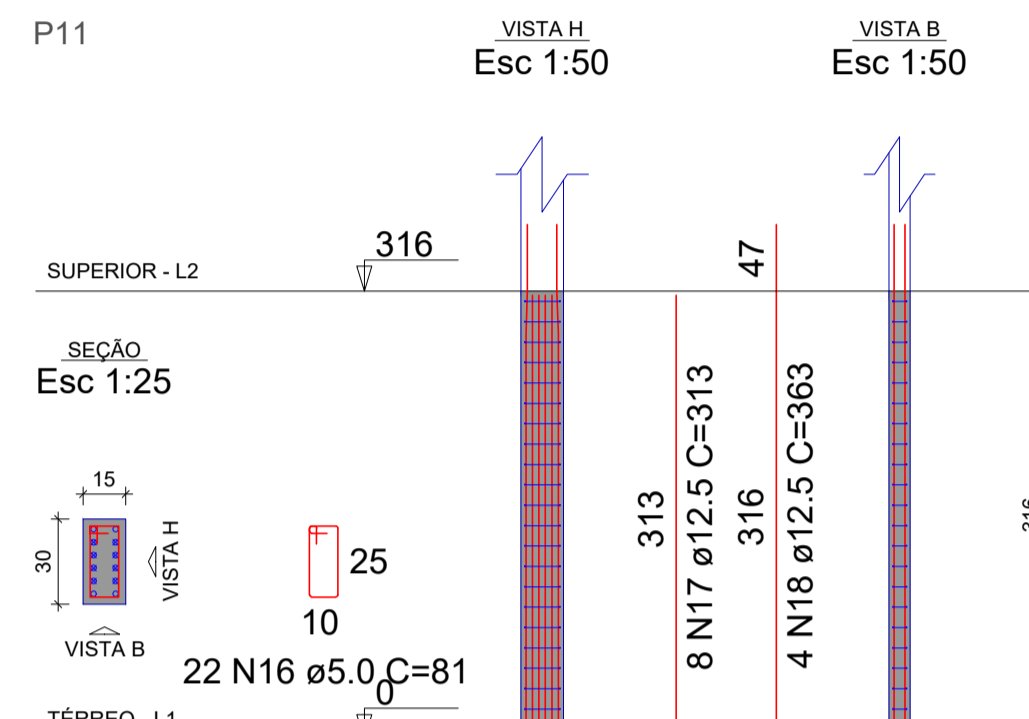
P7=P16=P19=P21

P8

RELAÇÃO DO AÇO



ELEMENTO	AÇO	N	DIAM (mm)	QUANT	C.UNIT (cm)	C.TOTAL (cm)
30xP1-L3	CA60	1	5.0	810	81	65610
	CA50	2	10.0	120	313	37560
	CA60	3	5.0	378	25	9450
14xP1-L2	CA60	4	5.0	378	81	30618
	CA50	5	10.0	28	313	8764
	CA50	6	10.0	56	354	19824
P2-L2	CA60	7	5.0	22	81	1782
	CA50	8	12.5	4	363	1452
4xP7-L2	CA60	9	5.0	108	81	8748
	CA50	10	10.0	16	313	5008
P8-L2	CA50	11	10.0	16	354	5664
	CA60	12	5.0	27	25	675
P11-L2	CA60	13	5.0	27	81	2187
	CA50	14	10.0	6	313	1878
P13-L2	CA50	15	10.0	4	354	1416
	CA60	16	5.0	22	81	1782
2xP13-L3	CA50	17	12.5	8	313	2504
	CA50	18	12.5	4	363	1452
P14-L2	CA60	19	5.0	44	81	3564
	CA50	20	12.5	16	313	5008
P13-L2	CA60	21	5.0	22	25	550
	CA60	22	5.0	22	81	1782
P14-L2	CA50	23	12.5	2	313	626
	CA50	24	12.5	8	363	2904
9xP20-L2	CA60	25	5.0	22	81	1782
	CA50	26	12.5	8	363	2904
2xP22-L3	CA60	27	5.0	243	81	19683
	CA50	28	10.0	36	354	12744
2xP22-L2	CA60	29	5.0	54	25	1350
	CA60	30	5.0	54	81	4374
3xP23-L2	CA50	31	10.0	12	313	3756
	CA60	32	5.0	54	81	4374
P25-L4	CA50	33	10.0	4	313	1252
	CA60	34	10.0	12	354	4248
P25-L3	CA60	35	5.0	66	25	1650
	CA60	36	5.0	66	81	5346
P25-L2	CA50	37	12.5	6	313	1878
	CA50	38	12.5	12	363	4356
4xP26-L4	CA60	39	5.0	8	25	200
	CA60	40	5.0	8	81	648
4xP26-L3	CA50	41	10.0	6	87	522
	CA60	42	5.0	27	25	675
P34-L2	CA60	43	5.0	27	81	2187
	CA50	44	10.0	6	354	2124
P25-L2	CA60	45	5.0	27	25	675
	CA60	46	5.0	27	81	2187
4xP26-L4	CA50	47	10.0	6	354	2124
	CA60	48	5.0	32	81	2592
P34-L2	CA50	49	10.0	16	87	1392
	CA60	50	5.0	108	81	8748
P34-L2	CA50	51	10.0	16	354	5664
	CA60	52	5.0	22	81	1782
P34-L2	CA50	53	12.5	4	313	1252
	CA50	54	12.5	4	363	1452



RESUMO DO AÇO

AÇO	DIAM (mm)	C.TOTAL (m)	PESO + 0% (kg)
CA50	10.0	1139.4	702.5
CA60	12.5	257.9	248.4
CA60	5.0	1850	285.2

PESO TOTAL (kg)	
CA50	950.9
CA60	285.2

Volume de concreto (C-25) = 11.29 m³
Área de forma = 52.88 m²

PROPRIETÁRIO: CÂMARA MUNICIPAL DE PATOS CNPJ: 09.309.618/00001-02

ENGENHEIRO: LUCAS SOUZA DOS SANTOS LEITÃO NUNES CREA: 1615595961

PROJETO ESTRUTURAL

PROJETO: REFORMA E AMPLIAÇÃO DA CÂMARA MUNICIPAL DE PATOS
ENDEREÇO: RUA HORACIO NOBREGA, 600, BELO HORIZONTE, PATOS/PE
PROPRIETÁRIO: CÂMARA MUNICIPAL DE PATOS

RESPONSÁVEL	RUBRICA	DATA	REVISÃO
DESENHO		Novembro de 2021	
CÓPIA		ÁREA DO TERRENO: 1595,35 m²	
ART		ÁREA DA AMPLIAÇÃO: 211,37 m²	
PRANCHA	DESENHO:	ESCALA:	ÍNDICE DE APROV.: 2
01/01	PILARES	INDICADAS	

LEITAO ENGENHARIA
& SERVIÇOS | CNPJ: 37.283.988/0001-36